



**A POOR WIDOW CAME AND PUT IN  
TWO SMALL COINS WORTH A FEW CENTS**

**Are You Giving Your  
Livelihood?**

# St Anne's Pancake Breakfast!



**NEXT WEEK**  
**SUNDAY, NOVEMBER 15**

Our Pancake Breakfast will be held in Centennial Hall following the 8 AM, 10 AM & 12 Noon Masses. Entrance is free but admission ticket is Mandatory to assist with head count for food prep. Tickets are available only at Rectory. must be picked up by November 9. No tickets at the door! Your monetary donations are greatly appreciated!

## Home of Reverence

*Eucharistic amazement* is expressed in reverence and in the dignity and care brought to every celebration of Mass. These are attitudes that befit not only the priest and other sacred ministers, but all the baptized.

Through Baptism and Confirmation, God has prepared his children to stand in his presence and offer him worship. *Christian*, says Saint Leo the Great, *know your dignity (Sermon 1 on the Birth of the Lord)*.

The first school of reverence is the home. Children can learn from their earliest years to make the sign of the cross slowly and deliberately, to kneel in adoration, to listen quietly, to stand in attention, and to treat holy things with



respect. Adults can show by their example that the church is the house of God and the Mass the holiest of mysteries.

In true reverence there is nothing constrained or artificial. Reverence is a joyful and gracious thing, akin to the wonder of one who

finds himself face to face with a great beauty, or heart to heart with a great love.

To every word and gesture of the Mass give the imprint of reverence. *I bow down before your holy temple*, says the psalmist, *filled with awe* (PSALM 5:8).

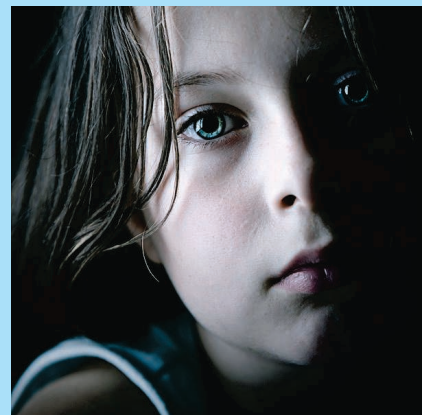
### Memorial Recital Remembering Bishop Donato

A Memorial Recital remembering Bishop Thomas Donato will be held on Sunday, November 15, 3 PM at St Henry's Church in Bayonne. The event will be presented by Henry C. Rawls & The Covenant Choir and accompanied by Daniel McCulloch. All proceeds to benefit the National Pancreatic Cancer Foundation. **This event is free and open to the public. For more information, call 908.884.8430 or 201.436.0857**



## Safeguarding Children and Addressing Abuse

The Archdiocese Acts to Protect Youth and Children



Archbishop Myers has stated categorically that the primary responsibilities of the Archdiocese are to protect children and young people, and to promote the healing of, and provide compassion to, victims of abuse.

The Archdiocese of Newark requires all staff and volunteers working with children and youth to undergo background checks and receive sexual abuse awareness training. More than 20,000 Clergy, Religious and Lay people have received this training and undergone criminal background checks.

Nearly 95,000 children annually receive safe environment training through our Catholic schools and through opportunities offered to public school students in our religious education programs.

The Archdiocese utilizes the services of a Licensed Clinical Social Worker as the first contact for individuals who allege that they were abused so that counseling and other support services can be offered immediately if appropriate – sometimes even before a determination is made regarding the credibility of an allegation.

A full-time Office of Child and Youth Protection dedicated to protecting children works with parishes and schools to ensure that safe environments are in place throughout the Archdiocese.

### THIS WEEK



**November 10**  
 St Leon The Great  
 Pope 440—461

## 2016 Pro-Life Poster/Essay/Video Contest

This contest is open to all Elementary School, High School and Religious Education Students on the theme **EVERY LIFE IS WORTH LIVING**. Use your creativity to write an essay, design a poster or record a video to convey to others that every life is a gift worth living. Posters/Essays/Videos will be judged in the following groups:

- 1<sup>st</sup>-5<sup>th</sup> Grades- Poster Only
- 6<sup>th</sup>-8<sup>th</sup> Grade Essay or Video-30 seconds or less
- High School (9<sup>th</sup>-12<sup>th</sup> Grades) Essay or Video-30 seconds or less

Prizes will be awarded for each group and category (posters, essays and videos) as follows: First Place Winners: \$50 Visa Gift Card, Second Place Winners: \$25 Visa Gift Card. **Entries must be submitted no later than December 11, 2015.** Winners will be honored at the Pro-Life Mass on **January 17, 2016** at The Cathedral Basilica of the Sacred Heart.

*Submit your Poster/Essays/Videos to: The Respect Life Office, Archdiocese of Newark, 171 Clifton Avenue Newark, NJ 07104. Any questions or to submit via email contact Cheryl A Riley at 973-497-4350 or rileyche@rcan.org*

## World Meeting of Families Videos



The World Meeting of Families Congress in Philadelphia now has access to the keynote presentations and select breakout talks which took place in Philadelphia in preparation for Pope Francis' visit in September. You can go to: **WORLDMEETING2015.ORG** to access these inspiring, informative and well done presentations. Upon accessing the sight, click on the "Keynote Presentations and Select Breakout Talks" on the upper left hand side. Many of the presentations are available in Spanish and a few others in Italian and French.

## Next Step in Technology at St Anne

If you remember, in late summer, I announced the launch of a brand new parish website, [www.sahjerseycity.com](http://www.sahjerseycity.com), and wrote briefly of the increasing importance for parishes to harness the power of technology, which is omnipresent in the classroom, the workplace and the home. Apart from being visually appealing, the new website is user friendly (intentionally formatted to mimic the weekly bulletin in order to facilitate ease of use) and useful — currently, you can register with the parish through the website, either for the first time, or amend your current registration to reflect any changes in address or other contact information. Registration is also available for the Family Faith Formation Program. Baptism is in the works. Weather bulletins and other timely information will also be broadcast on the website, so bookmark and check it periodically.






In keeping with this continuing effort to utilize technology effectively and responsibly for the long-term wellbeing of the parish, as of last weekend, we have entered the 'twitter sphere'. Five parish twitter feeds are now online. Four are to facilitate the main clusters of the Family Faith Formation Program: **sah\_promise** for kindergarteners and first graders; **sah\_goodnews**, for second and third graders; **sah\_venture**, for fourth, fifth and sixth graders, and **sah\_visions**, for seventh and eighth graders.

The fifth feed is **stah\_nation**, and is for the parish at large. One more feed is to be brought online in the coming weeks, earmarked for the Confirmation program. Families registered with the Family Faith Formation program have been asked to 'follow' the respective feed(s) for their cluster(s). Everyone is encouraged to follow the general parish feed, **stah\_nation**. From this weekend, the parish website will feature links to the various Twitter feeds, click on the appropriate link, and you will be taken to that particular Twitter account, once there, click 'follow'. Twitter is fast, easy, and free. If you don't have a Twitter account, you can open one with just a valid email. Next week I will touch on twitter etiquette.



Thanks for your attention—NRM

### The new Twitter feeds:

-  **sah\_promise** **K-1**
-  **sah\_goodnews** **2-3**
-  **sah\_venture** **4-6**
-  **sah\_visions** **7-8**
-  **stah\_nation** **General parish feed**

## JOB OPENING

### Business Manager — St Elizabeth Church, Wyckoff

The Business Manager is primarily responsible for the temporal, physical and material aspects of the operation of St. Elizabeth Church. This position reports directly to the Pastor. Duties include:

- Maintains and monitors the inventory of all parish maintenance vehicles, equipment & supplies.
- Manages the purchase and maintenance of all computer hardware, software and office equipment.
- Conducts and manages all special projects as directed by the Pastor.
- Provides for the development and maintenance of the parish database and websites.
- Maintains banking relationship and provides primary contact.
- Primary Liaison for school tenant.
- Provides cash management function, maintains all bank accounts and works with accountant to reconcile accounts.
- Processes payroll and distributes all year end reporting and prepares and distributes year-end contribution statements to parishioners.
- Meets with maintenance supervisor to maintain an ongoing schedule of recurring tasks with regard to maintenance of parish build-

ings and grounds and all preventative maintenance procedures.

- Reviews all work orders and maintenance projects on a regular basis for accuracy and timeliness.
- Coordinates accounts payable and processes all payments.
- Maintains all personnel, payroll, accounts payable and cash files in accordance with RCAN retention schedule.
- Maintains master key system and assignment log for all parish buildings.
- Provides support for the Pastor on special projects as required.

#### Contract Administration

- Monitors activity of outside vendors and contractors providing goods or services to the parish to insure contract compliance.
- Negotiates terms and conditions of all purchases of supplies or services for the parish in consultation with the maintenance supervisor, pastoral staff personnel.

#### Budget Administration

- Coordinates the annual budget process in consultation with the Pastor and accountant. Analyzes revenue and expense trends and advises pastor of significant variances to budget.

- Reviews all purchase requests for budget compliance.

#### Personnel Administration

- Maintains all personnel records and monitors all sick and vacation days to insure compliance with parish policies.
- Assists in the parish staff selection process, conducts reference and background verification and advises the Pastor of their results.

#### Qualifications/Skills

- Proficient in QuickBooks, MS Office, required, ADP experience desirable.
- Must possess excellent verbal and written communication and interpersonal skills, professional demeanor and the ability to interact with all levels.
- Must demonstrate superior organizational ability, resourcefulness and be able to work independently.

#### Education/Experience

- Accounting/Finance degree.
- 5+ years as a Business Manager.

**Please include resume and refer to position title and email to: Rev James J Weiner, Pastor at frjim@saintelizabeths.org**

# Making Your Medical Treatment Wishes Known Through An Advance Directive

## Why have an Advance Directive?

Many choose to have an advance directive simply for their own peace of mind. Others do it to obviate the need for difficult decision making by their loved ones when they are already facing a very difficult time.

## What are Advance Directives?

Advance directives are documents, such as a living will, healthcare proxy or durable power of attorney for healthcare that allow you to clearly express in writing and provide direction to your family, friends and medical personnel concerning your future medical care at a time when you cannot speak for yourself. The form your advance directive takes is up to you and you may choose a:

### Living Will

A living will is a document that outlines a set of instructions that document your wishes about life-sustaining medical care. Should you become terminally ill, incapacitated, or unable to communicate or make decisions, a living will protects your rights and wishes to accept or refuse medical care.

### Healthcare Proxy

In a healthcare proxy, you designate or appoint a person or agent to make your medical decisions if you are unable to do so. The person chosen should be someone you know well and trust to honestly represent your preferences should you become terminally ill, incapacitated or unable to communicate or make decisions. The person you choose may have to use their own judgment in the event of a medical decision for which your wishes are not known, so it is important to that you thorough discuss your wishes with said person before naming them as your agent.



### Durable Power of Attorney for Healthcare

A durable power of attorney for health care is a legal document created only for the limited purpose of making health care decisions. When creating a durable power of attorney you must also choose an agent, who is the person you designate to carry out the wishes and duties you have outlined in the durable power of attorney. The agent should be someone you trust, who will not take advantage of you when you are incapacitated, and who is willing to serve as your agent. You should also consider naming a second person to act as an agent in the event that your first choice is unavailable or is unwilling to make the decision.

Once you have signed your advance directive, you should inform your physician(s), family, and your religious advisor. Note that if you change your mind after creating the document, you can amend or revoke it at any time.

Should you have any questions about on advance directives, please contact Elizabeth F Caraballo, Esq at [director@thewaterfrontproject.org](mailto:director@thewaterfrontproject.org).

INFORMATION PROVIDED BY



**The Waterfront Project, Inc**

**22 HACKENSACK AVENUE, WEEHAWKEN NJ 07086**  
**WWW.THEWATERFRONTPROJECT.ORG**

*The information provided in this Information Flash is for informational purposes only and not for the purpose of providing legal advice. The Information Flash does not create an attorney-client relationship. You should contact your attorney to obtain advice with respect to any particular issue or problem. The opinions expressed at or through this Information Flash may not reflect the opinions of The Waterfront Project, Inc, the St Anne of the Heights Parish or any individual attorney affiliated with The Waterfront Project, Inc.*

## CATHOLIC CEMETERIES, A MINISTRY OF THE ARCHDIOCESE OF NEWARK

### Did You Know?

- Within the first 24 hours of a death, a spouse and/or family members will have to make at least 50 difficult and emotional decisions under stressful circumstances.
- The spouse alone often must bear much of this heavy burden, since many of today's families are widely spread.
- On occasion, the spouse and/or family will

second-guess hastily made decisions and will wonder *is that what Mom or Dad would have wanted?*

- You have an opportunity at the present time to ease an already stressful situation for your family by pre-planning final arrangements. It is genuinely a loving gift for your family.

**Speak with a Memorial Planning Advisor at Catholic Cemeteries or stop by an upcoming open house event to learn more about making cemetery arrangements in advance. Call 888-498-5209 or visit [www.CemeteryMinistry.org](http://www.CemeteryMinistry.org)**



# SAINT ANNE OF THE HEIGHTS CHURCH

3545 Kennedy Blvd., Jersey City, NJ 07307

Tel: 201-360-0838 Fax: 201-721-5996

info@sahjerseycity.com SAHJERSEYCITY.COM

## Pastoral Team

<b>Fr. Nigel</b>	<b>Parish Priest</b>
<b>Fr. J. Ranieri</b>	<b>Weekend Assistant</b>
<b>Msgr. L.J. Miller</b>	<b>Weekend Assistant</b>
<b>Fr. D.X. Stump, S.J.</b>	<b>Weekday Assistant</b>
<b>Mrs. J. Waddleton &amp; Lt. J. Carroll</b>	<b>Trustee</b>

## Weekly Planner

### SUNDAY 11/8 • 32<sup>nd</sup> Sunday in Ordinary Time

#### • Stewardship Sunday

10 AM	CCD Attend Mass <i>Church</i>
10 AM-1 PM	H.N.S. Mass/Mtg <i>Church/Cent Hall</i>
1-3 PM	Fil - Am Mtg <i>Cent Hall</i>

### MONDAY 11/9

1-3 PM	St. Anne Seniors <i>Cent Hall</i>
3:30-4:30 PM	Legion of Mary <i>Convent Comm Room</i>
6-8 PM	Brownie Mtg <i>Cent Hall</i>

### TUESDAY 11/10

12:15 PM	BINGO <i>Cent Hall</i>
3-4 PM	Holy Hour for Priests <i>Convent Chapel</i>
4 PM	Rosary Society Mtg <i>Cent Hall</i>

### WEDNESDAY 11/11 • Veterans Day

#### THURSDAY 11/12

7-9 PM	OLG Choir <i>Convent</i>
--------	--------------------------

#### FRIDAY 11/13

12:15 PM	BINGO <i>Cent Hall</i>
7:30-9:30 PM	J&M Prayer Mtg <i>Convent</i>

#### SATURDAY 11/14

2-4:30 PM	St. Padre Pio Prayers/Mtg <i>Cent Hall</i>
Rosary Plant Sale after Saturday Masses ONLY <i>Cent Hall</i>	

### SUNDAY 11/15 • 33<sup>rd</sup> Sunday in Ordinary Time

7:30 AM-1:30 PM	Parish Pancake Breakfast <i>Cent Hall</i>
10 AM	CCD attend Mass <i>Church</i>

## Liturgies

<b>Saturday Evening Church</b>	English 5:30 PM
<i>(anticipating Sunday)</i>	Misa Español 7 PM

<b>Sunday Church</b>	8 AM, 10 AM, 12 Noon
----------------------	----------------------

<b>Monday ▶ Saturday: Mass Church</b>	9 AM
---------------------------------------	------

<b>Wednesday: Mass Church</b>	7 PM
-------------------------------	------

## Holy Hour

<b>Tuesdays Convent Chapel</b>	3-4 PM
--------------------------------	--------

## Sacrament of Penance

Saturdays <i>Church (Or by Appointment)</i>	5 PM
---	------

## Schedule of Masses November 9<sup>th</sup>-15<sup>th</sup>, 2015

### Monday, November 9

9 AM	Novena
------	--------

### Tuesday, November 10

9 AM	John Shin	<i>Family</i>
------	-----------	---------------

### Wednesday, November 11

9 AM	Very Rev. Nigel	<i>St. Joseph Morning</i>
	Mohammed, V.F.	<i>Prayer Group</i>
7 PM	Special Intention	<i>OL Perpetual Help Group</i>

### Thursday, November 12

9 AM	† Giuseppe & Rosalina Leone	<i>Mr. &amp; Mrs. Angelo Tango</i>
------	-----------------------------	------------------------------------

### Friday, November 13

9 AM	Father David Stump	<i>St. Joseph Morning Prayer Group</i>
------	--------------------	--

### Saturday, November 14

9 AM	Catherine Burke	<i>St. Joseph Morning Prayer Group</i>
------	-----------------	--

5:30 PM	† Robert Scanlon	<i>Debby DeVenezia</i>
7 PM	† Rodriguez Family	<i>Wanda Butler</i>

### Sunday, November 15

8 AM	† Paul Grundling	<i>Wife</i>
10 AM	† Joseph & Michael Barbalinardo	<i>Frances &amp; Family</i>
12 PM	† Gloria Engelhardt	<i>Kathleen Castle</i>

## Sunday Readings

First Reading:	<b>1 Kings 17:10-16</b>
----------------	-------------------------

Psalm:	<b>Psalm 146:7, 8-9, 9-10</b>
--------	-------------------------------

Second Reading:	<b>Hebrews 9:24-28</b>
-----------------	------------------------

Gospel:	<b>Mark 12:38-44</b>
---------	----------------------

## Weekday Readings

### Monday Dedication of the Lateran Basilica

Ez 47:1-2, 8-9, 12 / Ps 46:2-3, 5-6, 8-9 / Jn 2:13-22
---

### Tuesday Saint Leo the Great

Wis 2:23-3:9 / Ps 34:2-3, 16-17, 18-19 / Lk 17:7-10
---

### Wednesday Saint Martin of Tours

Wis 6:1-11 / Ps 82:3-4, 6-7 / Lk 17:11-19
---

### Thursday Saint Josaphat

Wis 7:22B-8:1 / Ps 119:89, 90, 91, 130, 135, 175 / Lk 17:20-25
--

### Friday Saint Frances Xavier Cabrini

Wis 13:1-9 / Ps 19:2-3, 4-5AB / Lk 17:26-37
---

### Saturday

Wis 18:14-16; 19:6-9 / Ps 105:2-3, 36-37, 42-43 / Lk 18:1-8
---

## Sanctuary Gifts for November, 8<sup>th</sup>-14<sup>th</sup>

<i>Gift</i>	<i>In Memory/Honor of</i>	<i>Requested By</i>
-------------	---------------------------	---------------------

Altar Wine	† Warren Lewis	Parish Intention
------------	----------------	------------------

Altar Bread	† Antonio D'Amico	Parish Intention
-------------	-------------------	------------------

Sanct. Lamp	† Roy Maglori	Clare & Family
-------------	---------------	----------------

Altar Candles	† Mary Bakerowski	Parish Intention
---------------	-------------------	------------------

## Sick List

**Let us pray for the sick** (People will remain on sick list for 2 weeks unless otherwise notified): Jennifer O'Connor ● Donna Tuzzo ● Matt Bolger ● Dennis Mallon ● Marie Carlson ● Lawrence Shin ● Lupe Pena ● Frances Kearns ● Nicholas Zegular ● Frances Wise ● Vicky Aguilon ● Josephine Cermak Rowan ● Steve & Rachel Mastin ● Diane Shea ● Joseph Callandrillo ● Humberto Quintana ● Julia Annicchiarico ● Javier Vega ● Jennifer Moloughney ● Antoinette Maddi ● Carol Jordan ● Anthony Biggio ● Sammy DeLeon ● Shane Quinn ● Alice Daly ● Sadie Krieger ● Dolores DelMonte ● Dianne O'Sullivan ● Carl Carlson ● Larry Bello ● Miyuki Campbell ● Diane Albert ● Meghan Connaughton ● Lisaul Abreu

## Ministry to the Sick

We hope to give to all the sick and aged in our parish the opportunity to receive the Eucharist. If you or someone you know can no longer get to church, and would like a Eucharistic Minister to bring you Communion, please call **St. Anne's Rectory at 201-360-0838 or email: info@sahjerseycity.com**

## November Papal Prayer Intentions

**Universal:** That we may be open to personal encounter and dialogue with all, even those whose convictions differ from our own.

**Evangelization:** That pastors of the Church, with profound love for their flocks, may accompany them and enliven their hope.

## Religious Education News

**Our Religious Ed Office is located inside St. Anne's Rectory. Office Hours: M-T-W 9 am to 5 PM, TR & F, 10 am to 5 pm.**

## Novena – November 2015

### Requested for

† Daniel Meleos	Parish Intention
-----------------	------------------

<i>1st Anniv. in Heaven</i>	
-----------------------------	--

† Alessandro Belfiore	Wife, Toni Belfiore
-----------------------	---------------------

Lawrence Shin	Mary Shin
---------------	-----------

† Salvatore Grillo	Frances & Family
--------------------	------------------

Gilda Spazian	Frances
---------------	---------

† Teresa Fusco	Saint Anne
----------------	------------

† Mercian Travasso	Piedad Mascarenhas
--------------------	--------------------

Encarnacion R. Sandal	Jocelyn R. Sandal
-----------------------	-------------------

### Birthdays Thanks Giving

† Charles Kaufman	St Padre Pio Prayer Grp
-------------------	-------------------------

Steven & Vicky Lullo	St Joe's Prayer Grp
----------------------	---------------------

Joe Stella	Pat & Family
------------	--------------

Toni Belfiore	St Joe's Prayer Grp
---------------	---------------------

Angela Stella	Roda & Stella Families
---------------	------------------------

† Mary Norton	Loretta Dempsey
---------------	-----------------

Matt Bolger	Loretta Dempsey & St Anne's Rosary Scty.
-------------	--

† Emily Infante	Loretta Dempsey
-----------------	-----------------

† Lorenza Dairo	Loretta Dempsey
-----------------	-----------------

Keith Masi	Loretta & Heather Dempsey
------------	---------------------------

Pat Roda	Loretta Dempsey
----------	-----------------

Dolores McNamara	Loretta Dempsey & St Anne's Rosary Scty.
------------------	--

† Wayne Hale	Bald & Waddleton Families
--------------	---------------------------

Dolly	St Joe's Prayer Grp
-------	---------------------

Elaine Taylor	St Joe's Prayer Grp
---------------	---------------------

Pat Roda	St Joe's Prayer Grp
----------	---------------------

Agnes Cassely	St Joe's Prayer Grp
---------------	---------------------

Kate Pollock	St Joe's Prayer Grp
--------------	---------------------

Lawrence Shin	St Joe's Prayer Grp
---------------	---------------------

Joan Krzudlo	St Joe's Prayer Grp
--------------	---------------------

Paul Meaass	Ruth Cullen
-------------	-------------

Robin Chimanski	Ruth Cullen
-----------------	-------------

† Warren Lewis	Judy Waddleton
----------------	----------------

## Baptism Information

**Baptisms take place on the 1<sup>st</sup> Sunday of every Month: 2 Baptisms per Mass at 10 AM & 12 Noon (English).** Because they will be promising to help raise your child in the practice of the Faith, the church requires that at least one of your child's godparents be a 'fully initiated Roman Catholic,' i.e., one who has been Baptized and received the sacraments of Holy Communion and Confirmation. At the time of registering your child for Baptism, we ask that one of your chosen godparents provide a copy of their Confirmation certificate or some documentation from their church of Baptism or Confirmation indicating the month and year of their Confirmation. GODPARENTS & PARENTS are also required to attend a "baptism instruction" session on Saturday (the day before the Baptism) @ 4:00 PM in CHURCH (English & Spanish). A donation to the church for Baptism is always appreciated: please place your offering in an envelope marked 'BAPTISM' with your child's name and drop it in the Sunday collection basket. **Contact the office with any questions. Thank You.**

# HUDSON FARMERS MARKET

Autumn is here. Get your Apple in many varieties. Huge selection of mums in various colors, pumpkins, gourds, corn stalks. All your garden needs for the fall season.

201-792-2992

3437 Kennedy Blvd., Jersey City



## RIOTTO FUNERAL HOME

50 Years Family Owned & Operated

CREMATIONS  
PREPAYMENT PLANS

201-798-3100 • www.riottofh.com

3205 John F. Kennedy Blvd., Jersey City, NJ

Richard J. Riotto - Manager, NJ Lic. No. 3907

Randolph M. Riotto - Manager, NJ Lic. No. 3417

Randolph A. Riotto - Manager, NJ Lic. No. 2373

Toni M. Pagliarini - Manager, NJ Lic. No. 4505

## PROTECTING SENIORS NATIONWIDE



\$19.95\*/Mo. +  
1 FREE MONTH

- > No Long-Term Contracts
- > Price Guarantee
- > American Made

TOLL FREE:  
1-877-801-7772

\*First Three Months

**HOLIDAY SPECIAL**



## HOLY APOSTLES ONLINE CAMPUS

Affordable Undergraduate & Graduate  
Degrees 100% Online



"CULTIVATING LEADERS FOR EVANGELIZATION"

www.holyapostlesonlinecampus.com | 866-470-6733

## DRENNAN

## BROTHERS LLC

Roofing • Siding • Windows • Gutters

Fast, Friendly Service

201-388-5299

**Open Sunday**

# CONSUMER CARPETS

Special Prices For Our 20th Anniversary - Just Mention Ad!

CARPET ★ TILE ★ LINOLEUM ★ HARDWOOD FLOORS ★ CONTRACT WORK

- CARPET REMNANTS (100's in stock)
- VERTICAL & MINI BLINDS
- FREE SHOP AT HOME

- NEXT DAY INSTALLATION
- FREE ESTIMATES
- PERGO LAMINATES

NO PAYMENT • NO INTEREST - FOR 6 MONTHS

3408 KENNEDY BLVD., JERSEY CITY, NJ

T: 201-792-2712 F: 201-792-0321

WEDDING AND PARTY CAKES  
OUR SPECIALTY

## Monteleone's Bakery

798-0576

Fax:  
201-798-1454

*Fancy Cakes*

TASTY PASTRY  
739-41 Newark Ave.  
Jersey City



THIS SPACE IS  
**AVAILABLE**



BECAUSE VIBRANT  
CHURCHES MATTER

NEXT EXIT

**DREAM JOB**



- Growing company hiring Ad Sales Executives
- Sales experience preferred
- Full-time
- Overnight travel required
- Uncapped commissions
- Competitive benefits program

E-mail [jobs@4LPi.com](mailto:jobs@4LPi.com) for more information

487-5577 • 1510 Fremont - Algoma

402-262-786-7638

13705 W Fieldpointe Dr. (262) 796-3661

487-3435

487-9929

10% OFF

Happy 2015 from Regency

**Your Ad Here**

**SUPPORT OUR PARISH THROUGH LOCAL ADVERTISING**

Contact Adelyn Amaya to place an ad today!  
AAmaya@4LPi.com or (800) 477-4574 x6375

## PROFESSIONAL SOUND & SECURITY

Stereos • Alarms • DVD • Tinting  
Navigation • Custom Wheels

201.795.0507

76/78 Grace St., Jersey City

www.ProfessionalSoundSecurity.com

Joseph T. Discepola D.M.D.

PA - DENTIST

"We Cater  
To Cowards"

Hours by Appointment  
All Insurances Welcome

281 Central Ave., Jersey City

201-659-0295



find out how  
far your heart  
can reach

Millions of people  
overseas depend on  
you. PLEASE HELP.

1-888-354-0060  
CRS.ORG/cb



## Robert Borowicz DMD

Family Dentistry

3338 Kennedy Blvd.  
Jersey City, NJ 07307

201-659-3042

www.drborowiczdentist.com

## DANS PAINTING

HOME, HOUSE,  
APARTMENTS

INTERIOR AND

EXTERIOR PAINTING

201-893-5100



For ad info. call 1-800-888-4574 • www.4lpi.com

St. Anne's, Jersey City, NJ

04-1043